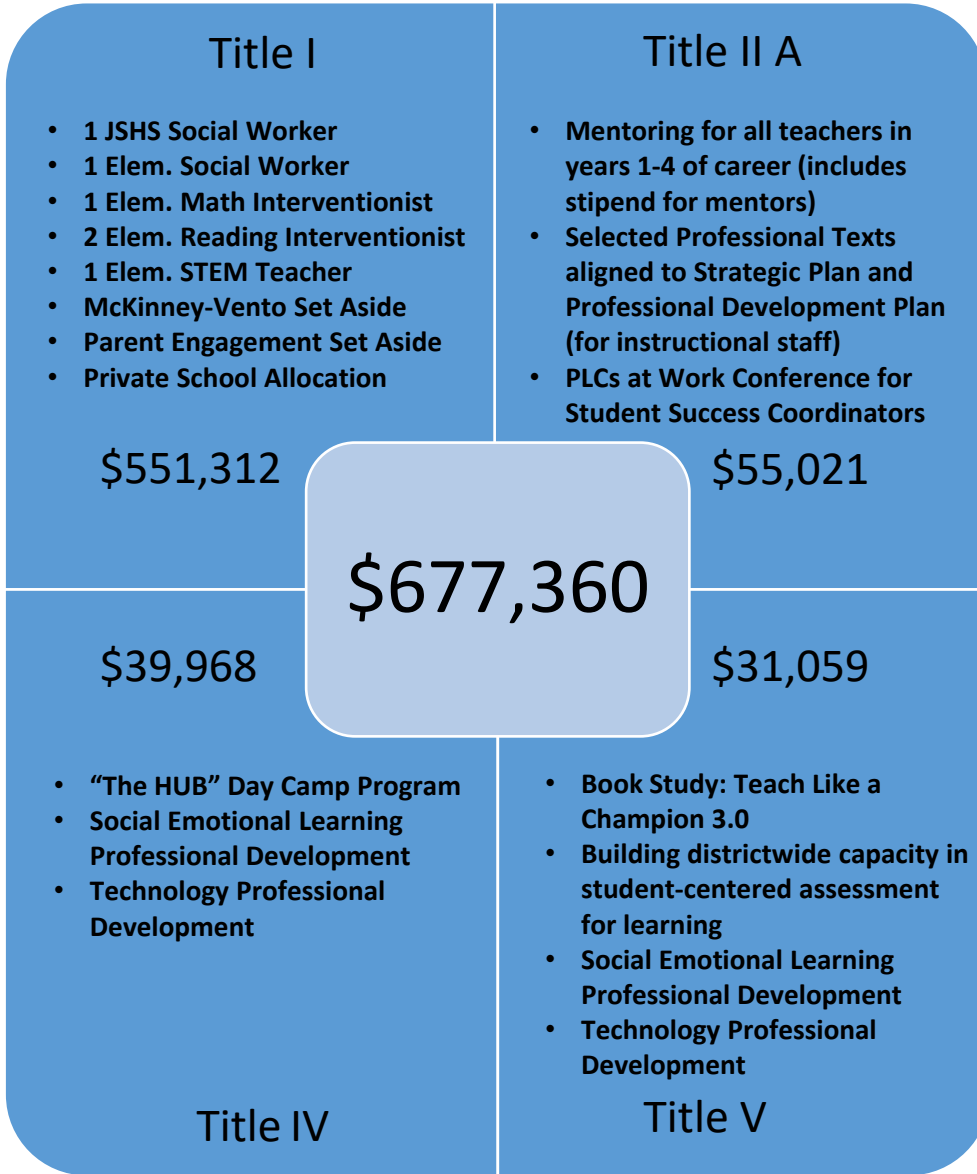




# Altmar - Parish - Williamstown

## ESSA Grants Overview for 2023-2024



- Grant application is due in September
- Funding runs from 9/1 until 8/31
- How much money each school receives is determined by the economic status of students attending a school, as well as the needs of the school
- APW operates a school-wide program, benefiting all students not just those who are identified as eligible for intervention services
- Eligibility for Title I services is not based on income
- Submission of Final Program Report to ensure accountability and transparency

If you reviewed this overview, please take a moment to complete a brief survey for our records. Thank you!

[Click Here for Public Comment Survey](#)