



REBEL ALLIANCE

ALTMAR-PARISH-WILLIAMSTOWN CENTRAL SCHOOL DISTRICT

SPRING/BUDGET 2024

Budget Dates to Remember

MAY 14

MEET THE CANDIDATE NIGHT AND PUBLIC BUDGET HEARING

6 p.m.
District Office
Conference Room

MAY 21

BUDGET VOTE AND BOE ELECTION

12 p.m. to 9 p.m.
District Office
Conference Room

APW JSHS students participate in vital life-saving programs

A team from the American Red Cross recently brought two emergency preparedness programs to Altmar-Parish-Williamstown Junior-Senior High School, imparting crucial skills essential for emergency situations.

Citizen's Preparedness Corps Training is a state program designed to teach all members of the community how to prepare, respond and recover in the event of an emergency. The training also provides information on types of common disasters, ways to prepare as an individual, family, and community member, what to do when disaster strikes and what actions you can take afterward to aid in your recovery.

Hands-only CPR teaches students the full "circuit" of compression-only CPR. Participants learn how to check for consciousness, call 911 (or the local emergency number) and give continuous chest compressions. CPR training certification is not provided through this course.

Katherine Olmstead, who is part of the Red Cross team and an AmeriCorps member, expressed the importance of building self-confidence and resiliency during these presentations. "If and when students are faced with a stressful situation, they remember the knowledge and the skills they have and trust in their ability to take care of themselves and the ones around them," she said.

These programs allow students to listen, engage in discussions, watch videos and participate in hands-on activities. Olmstead even encouraged a friendly competition as student volunteers attempted four minutes of non-stop chest compressions to the beat

of "Stayin' Alive" by the Bee Gees.

"Our JSHS students have now been equipped with knowledge that could potentially save the life of a family member or friend," noted District Athletic Director George Emrich, who discovered the immense value of these programs at a previous district before he brought them to APW.

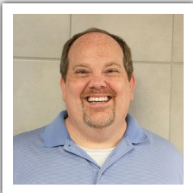
Emrich plans to make these trainings an annual activity for all JSHS students, while also exploring opportunities to introduce babysitting, lifeguarding, EMT or other advanced lifesaving courses to the district.

The Red Cross offers a similar but condensed version of training called "Be Red Cross Ready." Their other program, "Prepare with Pedro," is tailored for pre-K through second grade students. All preparedness presentations are free of charge. To learn more, visit <https://www.redcross.org/local/new-york/eastern-new-york/about-us/our-work/emergency-preparedness-programs.html>.



ACADEMICS AT ITS BEST • PURSUIT OF EXCELLENCE • WHERE STUDENTS COME FIRST.

A message from the APW Board President



The time of the year has arrived where we come to you, the taxpayers of our district, to present our 2024-2025 APW school budget. Many months and hours have gone into preparing the budget for the upcoming school year, and we believe that we are presenting the best, fiscally responsible budget that we can. Please take a look at the information throughout this edition of the Rebel Alliance and let us know if you have any questions. This year, you will see a number of propositions on the ballot.

- 1. The Operating Budget:** Your approval is needed to establish our operating budget for the 2024-2025 school year.
- 2. Transportation:** We are seeking approval to purchase buses using money from the transportation fund that was established in prior years. The request is to fund (3) diesel buses and (1) diesel wheelchair bus. ***This would result in no additional tax increase to you.***

3. Capital Project: Through the course of the ongoing capital project, the State Education Department has required some additional things to be done in the course of the work that has resulted in approximately \$1,000,000 worth of additional cost. We are requesting that you allow us to increase the cost of the project by \$998,000 and to use \$998,000 from the reserve fund to pay for it. ***This would result in no additional cost to the taxpayers as we will be using money that we already have in reserve.*** This work includes a fire wall that was required in the new auditorium and work at the Waste Water Treatment Plant that the NYS DEC and State Education Department are requiring.

4. Real Property Purchase: The district is requesting that you allow us to purchase the property adjacent to the JSHS on the north end of the bus garage. This property extends back and behind the JSHS. While we have no immediate plans to utilize the property, we are trying to be proactive in our needs assessment. There are many ways we could use the additional land, and

we believe that this is the best time to purchase property that is directly attached to our current campus. The total for this 37-acre property is \$295,000 plus any additional fees and transaction costs not to exceed a total of \$400,000. Once again, to remain fiscally responsible, ***we are requesting that you allow us to use money from the Construction Capital Reserve Fund to pay for this resulting in no additional tax increase to you.***

When you look at our strategic plan, each of these requests align with the goals that we have in place to help our students be successful in their academic careers. I encourage each of you to come out and vote May 21 from noon to 9 p.m. in the District Office Conference Room.

Thank you,

Shawn Clark
APW BOE President



National Read Across America Month

To celebrate National Read Across America Month, Ms. Perry's kindergarten class and Mrs. Phoenix's fourth grade class collaborated on multiple Dr. Seuss projects!



Propositions on the Ballot

Voters will be asked to decide upon four propositions and to elect three (3) Board of Education members.

Proposition 1 - Budget

Shall the proposed budget of \$39,679,371.00 (THIRTY NINE MILLION, SIX HUNDRED SEVENTY-NINE THOUSAND, THREE HUNDRED SEVENTY-ONE DOLLARS) for the Altmar-Parish-Williamstown Central School District as recommended by the Board of Education for the fiscal year beginning July 1, 2024 through June 30, 2025, be adopted and shall the Board of Education be authorized to levy the necessary taxes therefore?

Proposition 2 - Bus Purchase

Shall the Board of Education of the Altmar-Parish-Williamstown Central School District be authorized to purchase three (3) diesel school buses and one (1) diesel wheelchair bus, including necessary furnishings, fixtures, and equipment and all other costs incidental thereto, and expend a total sum not to exceed \$684,300.40 which is estimated to be the total maximum cost thereof, and pay for such vehicles by using the approximate remaining balance of \$643,529.67 from the Capital Reserve Fund for Vehicles approved by the District voters on June 16, 2020 and the balance of approximately \$40,770.73 from the Capital Reserve Fund for Vehicles approved by the District voters on May 17, 2022?

Proposition 3 - Capital Project

Shall the Board of Education be authorized to increase the total cost of the project approved by the voters on December 7, 2021 by \$998,000.00 for a total project cost of, \$37,998,000.00 and to use an additional \$998,000.00 from the 2020 Construction Capital Reserve Fund approved by the District's voters on June 16, 2020 to pay the additional project costs?

Proposition 4 - Land Purchase

Shall the Board of Education purchase approximately 37 acres of land and associated building(s) located at 679 County Route 22, Parish, New York and expend a purchase price not to exceed \$295,000.00, plus any additional fees and transactional costs, and said amount, not to exceed a total cost of \$400,000.00, or so much thereof as may be necessary, and to authorize the District to withdraw and expend said amount from the 2020 Construction Capital Reserve Fund?

Proposition 5 - Election of Three Board Members

1. Karen Oakes
2. Brad Tanner
3. Michael Hale Sr.

Understanding the Tax Levy

For school districts, the tax levy limit is the maximum allowable tax levy (before exclusions) that a school district can propose as part of its annual budget and need the approval of only a simple majority of voters (50 percent plus 1) to pass the budget. If a district proposes a budget with a tax levy amount (before exclusions) above this limit, it will need the approval of a supermajority of voters (60 percent) to pass the budget. School districts are required to report their calculated tax levy limit to the state comptroller by March 1 each year.

MAXIMUM ALLOWABLE TAX LEVY

The maximum allowable tax levy is the tax levy limit PLUS certain exclusions. Taxes levied to fund the following expenses are excluded from the tax levy limit:

- Voter-approved local capital expenditures.
- Increases in the state-mandated employer contribution rates for teacher and employee pension systems that exceed two percentage points.
- Court orders/judgments resulting from tort actions of any amount that exceeds 5 percent of a district's current levy.

A school district adds these exclusions to its tax levy limit without triggering the need for 60 percent voter approval.

PROPOSED TAX LEVY

The third tax levy number is arguably the most important. It's the tax levy called for by a school district's proposed budget. By definition, the tax levy is the total amount of money to be raised locally by a municipality (i.e., school district) after factoring in all other available revenues. If a school district's proposed tax levy minus exclusions is less than or equal to the district's calculated tax levy limit, the district will need the approval of a simple majority of voters to pass its budget. If the proposed tax levy minus exclusions is greater than the district's calculated tax levy limit, 60 percent voter approval is needed.

WHERE CAN I GET MORE INFORMATION?

Please attend future Finance Committee meetings to learn more about our district's finances. The annual meeting to discuss the budget is planned for May 14, 2024, at 6 p.m. at the JSHS District Office Conference Room.

Understanding Tax Levy and Tax Rate

HOW IS THE TAX LEVY DIFFERENT FROM THE TAX RATE?

The tax levy is the total amount that a school district raises each year in taxes from all property owners. The tax rate is the amount of tax paid for each \$1,000 of assessed value of property.

HOW DOES THE TAX LEVY CAP WORK?

Under New York State tax cap rules, school districts must use a complex formula to calculate their own unique tax levy limit, then apply exclusions set forth by law to determine the maximum allowable tax levy for a simple majority vote.

IS THE TAX LEVY WITHIN THE TAX CAP?

Yes, in fact, the proposed tax levy is equal to the district's maximum allowable tax levy limit. This will allow residents who are eligible for STAR rebates to receive them from the state.

APW's Maximum Allowable Levy \$6,726,370

APW Proposed Levy \$6,726,370

Voter approval = simple majority vote (50%+1)

APW's proposed 2024-2025 levy is equal to the maximum allowable levy.
Voter approval requires a simple majority vote (50% +1)

APW 2024-25 Proposed Revenue

Proposed Budget:..... \$39,679,371

Estimated State Aid: \$29,473,886

Other Revenue:.....\$2,379,115

Assigned Fund Balance:.....\$1,100,000

APW Proposed Levy.....\$6,726,370

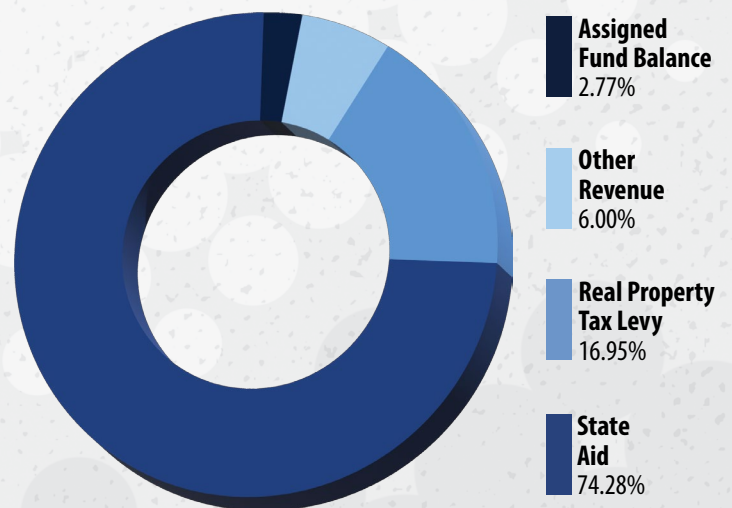
APW School Tax Levy

Understanding the tax levy limit as it applies to APWCSD. The NYS formula calculates the maximum allowable tax levy for the 2024-2025 school year.

NEW YORK STATE TAX LEVY LIMIT FORMULA

Tax Levy (for school year ending 6/30/24).....	\$6,538,579
	x
Tax Base Growth Factor	1.0086
	+
PILOTS (receivable for school year ending 6/30/24)	50,123
	-
Tax Levy to Pay for Court Orders/Judgements.....	\$0
	-
Capital Tax Levy (for school year ending 6/30/24).....	0
	x
Allowable Levy Growth Factor.....	1.0200
	-
PILOTS (receivable for school year ending 6/30/24)	56,438
	-
Total Tax Levy Limit Before Exclusions	\$6,721,394
Exclusions	+
(2024-25 Capital Tax Levy)	4,976
	-
APW's Maximum Allowable Levy for the 2024-2025 School Year	\$6,726,370

2024-2025 Proposed Revenue



Budget Comparison

	2023-2024 Adopted Budget	2024-2025 Proposed Budget
Central Administration and Board of Education	\$269,030	\$280,994
Business Administration	\$701,646	\$748,481
Personnel	\$298,706	\$314,354
Instructional and Program	\$10,871,515	\$10,937,726
BOCES Administration and Insurance	\$924,214	\$948,588
Supervision and Curriculum Development	\$1,102,737	\$1,021,025
Students with Disabilities	\$6,692,381	\$6,649,124
Athletics	\$473,370	\$487,167
Operation and Maintenance of Plant	\$2,368,761	\$2,272,249
Transportation	\$2,466,372	\$2,545,469
Employee Benefits	\$8,474,084	\$8,885,048
Debt Service	\$2,263,200	\$4,529,146
Interfund Transfers	\$60,000	\$60,000
Total	\$36,958,678	\$39,679,371

STAR Resources

The School Tax Relief (STAR) program offers property tax relief to eligible New York State homeowners.

Learn about STAR:
tax.ny.gov/STAR

Estimated Basic STAR exemption Savings based on a Hypothetical Home Within the School District with a Full Value of One Hundred Thousand Dollars (\$100,000). Not all of Altmar, Parish and Williamstown municipalities are at full valuation.

	Under the Budget Proposed for the 2024-2025 School Year
Estimated Basic STAR Exemption Savings ¹	\$351 - \$371 Based on Town

¹The Basic school tax relief (STAR) exemption is authorized by section 425 of the Real Property Tax Law.

Voting Information

The annual budget vote for the fiscal year 2024-2025 by the qualified voters of the Altmar-Parish-Williamstown Central School District, Oswego County, New York, will be held at the District Office Conference Room in said district on Tuesday, May 21, 2024 between the hours of noon and 9 p.m., prevailing time in the District Office Conference Room, at which time the polls will be opened to vote by voting ballot or machine.

Absentee Ballots and Early Mail Ballots

Eligible voters may submit absentee ballots and early mail ballots. For information, contact the District Clerk at 315-625-5251. Ballots must be received by 5 p.m. on May 21, 2024.

Voter Qualifications

Eighteen (18) years of age or older.

A citizen of the United States.

A legal resident of the APW Central School District for at least thirty (30) days prior to the vote.

Voters may be required to show proof of eligibility before casting their vote. The following forms of proof may be accepted (not limited to): birth certificate, driver's license, non-driver ID card, utility bill, voter registration card or passport. Any person not qualified to register or vote under the provisions of Sections 5-100 and 5-106 of the Election Law shall not have the right to register for or vote in an election.

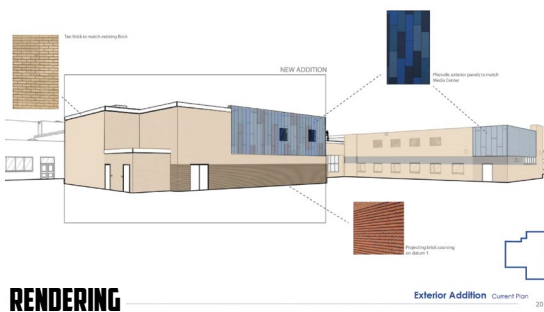
Capital Project Update

Sectional Perspective View



RENDERING

- 1** The above photos of the new auditorium include a view from the outside, the future stage and the space where seats will go. Plans for this space also include a drama club storage room and exterior bathrooms for sporting/outside events.



RENDERING



- 2** Brick is being added to complete the exterior portion of the addition.

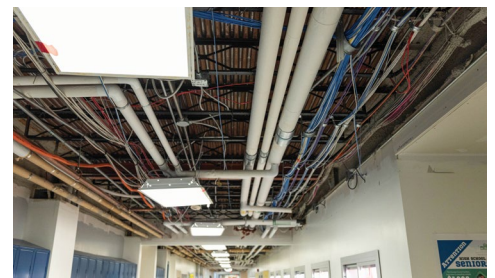


RENDERING

- 3** The new choral and band rooms are close to completion with offices, storage, practice rooms and the ability for each main room to fit up to 60 chairs. The band room will have access to get backstage in the new auditorium.



- 4** Contractors have been hard at work wrapping up the addition roof.



- 5** The JSHS main office wing is the next phase of the capital project, with construction already underway.

APW CSD Guidance Department Launches Career Exploration Lecture Series



APW Class of 2007 Alumnus Aerik Radley returns to APW JSHS to kick-off the Career Exploration Series.

The Guidance Department at Altmar-Parish-Williamstown Junior-Senior High School is proud to introduce its brand-new Career Exploration Lecture Series; a series that invites alumni, parents and community members to share and discuss their diverse professions with students.

"Presentations could consist of what you do as a career, what led you to your career, what education and/or training was necessary to obtain your career, and why you are passionate about what you do," said school counselor Courtney Streifert. "Students interested in specific fields of work will have the opportunity to attend any sessions of their choice."

APW Class of 2007 alumnus Aerik Radley kicked off the series by discussing his roles as both the marketing and communications director for Firley, Moran, Freer and Eassa

CPA, PC, and as an adjunct professor at SUNY OCC.

"These kids showed true interest and spirit during my presentation," said Radley. "I hope they continue learning about other alumni who went out into the world to carve their own path."

Also returning to their alma mater this spring are Erika Metott, who will discuss her experiences as a woman in the manufacturing industry; Brian Wilson, who will share insights into his dual roles as a chemist in the medical field and a college professor; and Celeste Marshall, who will present on her role as a transition youth counselor.

If you are interested in speaking to APW JSHS students about your career, please contact the APW JSHS Guidance Department at 315-625-5229.

A message from the Superintendent



INVESTING IN OUR FUTURE

As part of our community, we want to be clear about how your tax dollars are used to help support our

students and staff. Read on to see how the proposed budget for 2024-2025 aligns with APW's strategic goals, focusing on student achievement, equity, community engagement, and well-being.

Goal 1: Setting High Expectations for Excellence

We are committed to setting, communicating, and monitoring goals for both students and staff. To achieve this, a part of the budget will go toward staff training sessions and software tools aimed at tracking and monitoring student progress. Additionally, resources will be dedicated to programs that encourage student and staff personal growth, ensuring that their goals and achievements are celebrated throughout the year.

Goal 2: Achieving Inclusion for All

We want everyone to feel like they belong and have a say. As such, we have been working with the Student Government to develop a survey for students to provide suggestions and feedback to the administration. The information from this survey will be used to strengthen our programming. Also, we will continue to examine our policies and practices to make sure everyone feels included within our school community. Additionally, we'll put money toward helping students identify their strengths and interests, as well as learn about different career options and pathways.

Goal 3: Engaging Staff, Parents, and Communities

We recognize the importance of working together to help our students reach their goals. So, we have developed a plan for parent involvement and communication. In addition, we will evaluate our Multi-Tiered System of Supports (MTSS) to make sure extra help is given to students who need it. Our staff will also have multiple opportunities to learn and grow so that they can best meet the diverse needs of our students.

Goal 4: Building Safe, Positive, Healthy Climates

We believe students and staff should feel safe and cared for at school, which is why we will focus on teaching important social and emotional skills through our lessons. We'll also put money toward programs that promote positive behavior and well-being throughout our schools.

In short, the proposed budget for the 2024-2025 academic year reflects our commitment to the success and well-being of every student and staff member in our district. We are intentional about how we spend funds to meet our district goals and want to show how our resources are used to fulfill our mission and vision. Thank you for your support as we work together to invest in the future of our community.

Proud to be a Rebel,

Naomi Ryfun, Ed.D.

APW Superintendent of Schools

Introducing our new Elementary Assistant Principal: Melissa Nabinger



How many years have you worked in education?

This will be my 20th year in education.

What are you most excited about as you begin this new position?

I am excited to be returning to APW as I was the assistant principal at the APW JSHS from 2016-2018. I am excited to bring my experiences, my openness to learn and my child-centered approach to APW Elementary. I view education as a lifelong process, and I am looking forward to learning more about APW Elementary and the community. I am dedicated to continuing students' successes and will strive to continue the positive relationships, rigorous learning, and amazing APW Elementary School environment that encourages students to celebrate their individual strengths.

What are some fun facts about yourself?

I live in Pulaski with my husband and our four children. I enjoy running and biking. One interesting fact is that I worked at Walt Disney World when I was in college!

REBEL ALLIANCE



Altmar-Parish-Williamstown

Central School District

District Office

Post Office Box 97

Parish, NY 13131

315-625-5251

www.apwschools.org

NON-PROFIT ORG.

ECRWSS

US Postage Paid

Permit Number 9

Parish, NY 13131

**POST OFFICE BOXHOLDER
OR RURAL ROUTE PATRON**

ACADEMICS AT ITS BEST • PURSUIT OF EXCELLENCE • WHERE STUDENTS COME FIRST.

For Important Announcements, Annual Notifications, Events, Contact Information and other information,
visit the APW District website at www.APWSchools.org

APW science teacher leads district and community in total solar eclipse readiness



Jessica Halsey, a science teacher at Altmar-Parish-Williamstown Junior-Senior High School, showed dedication beyond the classroom when she spent months preparing staff, students and the community for the total solar eclipse on April 8.

Halsey kicked off the first of many eclipse preparedness events

by inviting a team from SUNY Oswego involved with the Nationwide Eclipse Ballooning Project to present to APW seventh graders. Students participated in lectures and hands-on activities as they learned about the significance of collecting eclipse data through helium-filled balloons.

From February to April, Halsey organized four Solar Eclipse Community Nights full of valuable information, scientific insights, safety precautions and activities centered around the eclipse phenomenon. Attendees received solar eclipse glasses, with additional distributions sent to both the elementary and junior-senior high school.

In March, Halsey organized a virtual conversation between APW seventh graders and NASA scientist Kelly Korreck,

providing an invaluable opportunity for students to delve deeper into eclipse-related research. Korreck is a NASA Program Scientist who serves as head of science operations and project manager for the Solar Wind Electrons Alphas and Protons, or SWEAP, investigation. SWEAP includes a cup that sits outside the spacecraft's heatshield to scoop up some of the Sun's plasma.

Halsey's proactive communication extended to the entire school community through her "Countdown to the Eclipse" email series, which was sent out a week before the event. These emails served as an educational resource for JSHS staff in anticipation of the impending eclipse.

The district witnessed an unforgettable eclipse experience, thanks to Halsey's enthusiasm and commitment to education, leaving a lasting impact on students, staff and community members alike.



**WHERE THE
GOLDEN SUNSET
MELLOW
TINTS THE
WESTERN SKY,
PROUDLY STANDS
OUR ALMA MATER
A.P.W. HIGH.
SING THE CHORUS.
LIFT IT UPWARD
IN HER PRAISES VIE.
HAIL TO THEE,
OUR ALMA MATER,
A.P.W. HIGH**

The APW Central School District in accordance with the Title IX of the Educational Amendments of 1972 and section 504 of the Rehabilitation Act of 1973 and does not discriminate on the basis of sex or handicap in the educational programs or activities it operates. This includes recruitment and employment of employees; pay and benefits; counseling services for students; access by students to educational programs, courses and activities. The District's Title IX Compliance Coordinators are Bethany Centrone, Esq. of Capital Region BOCES (900 Watervliet Shaker Rd, Albany, NY 12205; 518-862-5228) and Patrick Vrooman, Director of Personnel and Instruction, (639 Co. Rt. 22, Parish, NY 13131; 315-625-5274)